

The Snow Queen

ROCK 'N' ROLL PANTO

by Peter Rowe

PROGRAMME

Welcome to *The Snow Queen*, a unique version of our traditional Rock 'n' Roll pantomime, combining live performance and livestream broadcast, traditional panto gags and brand-new digital technology.

This re-imagined *The Snow Queen* had its first outing before Christmas last year when our creative team, cast and crew rose to the challenge of creating a "blended" version of the show, uniting audiences socially distanced in the theatre and watching on screen at home. When we were deciding what show would be best to re-open our doors, and breathe life back into our theatre this year, the spirit of community celebration embodied by the pantomime seemed the perfect choice. I'm delighted to say that all the original cast, crew and creative team are back with us to revive this special pantomime.

This show kicks off a return to live performance at the New Wolsey as restrictions ease. Our new participation space NW2 is already buzzing with our Youth Theatre and Young Company groups back in business. In July and August, our summer programme will make use of the whole site – the auditorium, refurbished foyer, NW2 and an outside stage in the new campus bowl – to host performances and participation for all the family.

In the Autumn we'll be staging our next football show, *Never Lost At Home*, celebrating the fortieth anniversary of Ipswich Town's famous UEFA Cup win before gearing up again for our panto at the end of the year. Of course we all long for a full auditorium with all restrictions lifted but we will continue to offer these shows as a livestream too so that those sheltering, or unable to access the theatre, will not be excluded.

Now more than ever we are grateful for the support of our funding bodies – Arts Council England, Ipswich Borough Council and Suffolk County Council – our sponsors, and especially our Members and patrons who have been so generous with donations through this very challenging year.

I hope you enjoy this brand-new twist on the traditional tale, whether you're watching it in the theatre, or at home, for the first time or as a returning fan. On behalf of us all, thank you for your continued support. We hope you have a safe and relaxed summer, and that you'll join us once again for live performance in person or online very soon.

Peter Rowe
Artistic Director

SYNOPSIS

All that social distancing and lockdown's been a bummer.

But here's the silver lining folks - it's panto in the summer!

The 5* smash-hit show of 2020, *The Snow Queen*, is back by popular demand! Peter Rowe's Rock 'n' Roll panto features all your favourite actor-musicians and iconic songs like *Let's Get Loud*, *If I Had a Hammer*, *I'm Gonna Be (500 Miles)*, *I Can See Clearly Now* and *Runaway Baby*. The show is once again available both in our auditorium and as a livestream directly to your home from Thursday 27 May until Sunday 13 June 2021.

All's well in the peaceful little town of Ballbroken; Gerda is about to be crowned the Queen of May, the blacksmith's apprentice Simon Clinkerbin hopes to graduate and get his very own hammer, and Dame Sigrid Smorgasbord has prepared a magnificent May Day feast. What's more, it looks like something's blossoming between Sigrid's young son Kay, and Gerda, the blacksmith's daughter. But when Primrose, Spirit of the Spring, smashes the Snow Queen's cursed mirror, little does she know this will only make matters worse...

******* A 'riotous jukebox jamboree... a total triumph' (*The Stage*)**

'A blended panto has been embraced by the venue with characteristic and inventive gusto. And it works!'
(*East Anglian Daily Times*)

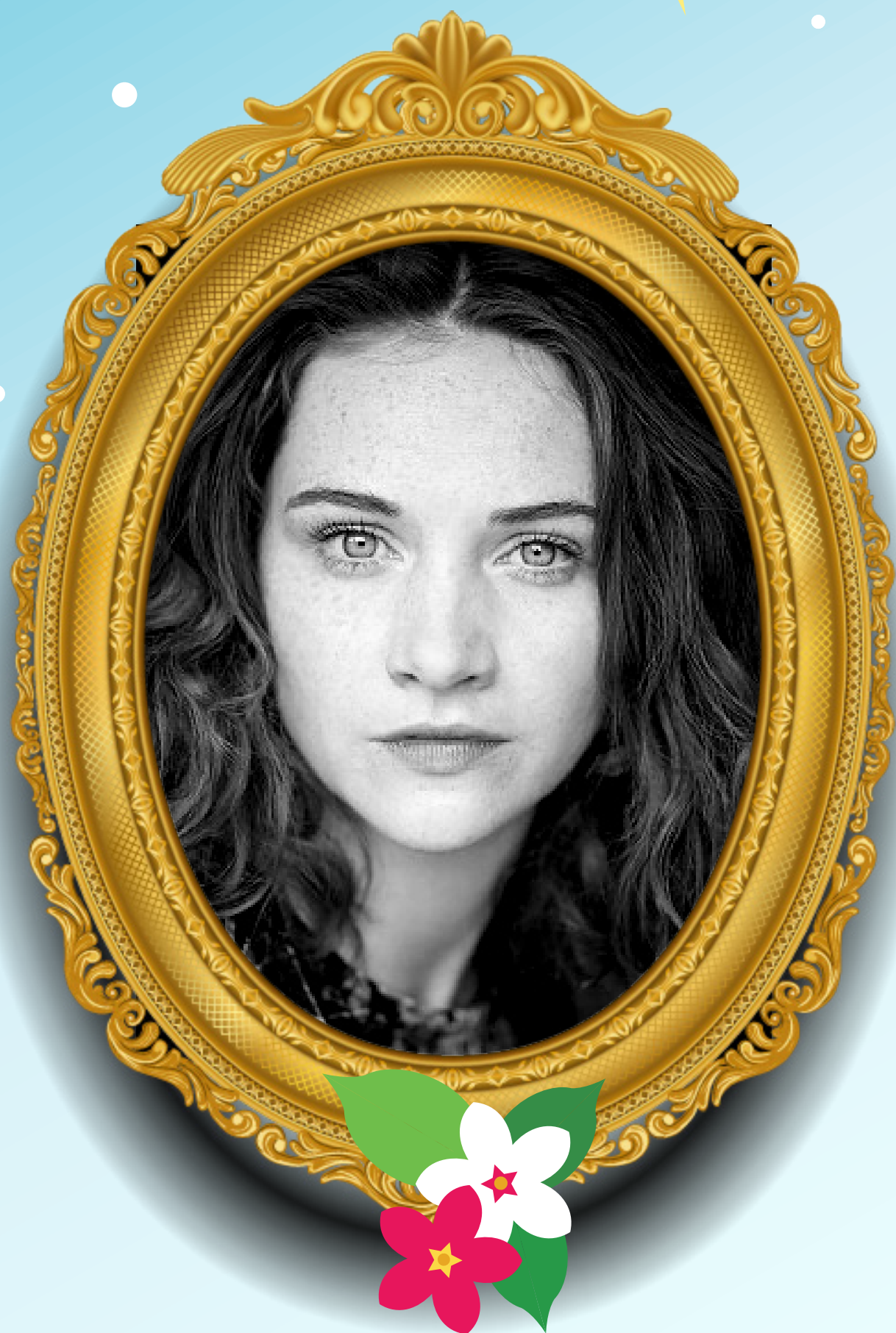
'Extremely funny'
(*The New York Times*)

THE CAST

ON STAGE ARE:

Lucy Wells as Gerda

Previous work at the New Wolsey Theatre includes: Beauty and the Beast, The Sword in the Stone, Sinbad, Red Riding Hood, Cinderella, Aladdin.



Adam Langstaff as Kay / Sven Lumhammer

Previous work at the New Wolsey Theatre includes: Grandma Saves the Day; Oxy and the Morons; The Who's Tommy (U.K. tour – Ramps on the Moon); Beauty and the Beast; The Sword in the Stone; Sinbad; Red Riding Hood; Cinderella; Aladdin and Our House (U.K. tour).



Steve Simmonds as Dame Sigrid Smorgasbord

Previous work at the New Wolsey Theatre includes: Grandma Saves the Day, Cinderella, Guys and Dolls, Aladdin, The Who's Tommy (U.K. tour – Ramps on the Moon), Made in Dagenham (Queen's Theatre, Hornchurch/New Wolsey).



Natasha Lewis as the Snow Queen / Primrose

Previous work at the New Wolsey Theatre includes: The Who's Tommy (U.K. tour – Ramps on the Moon); The Threepenny Opera (West Yorkshire Playhouse/Nottingham Playhouse/the Birmingham Rep/New Wolsey Theatre/Graeae); Our House - The Madness Musical (U.K. tour); A Funny Thing Happened on the Way to the Forum.



James Haggie as Simon Clinkerbin / Icicle

Previous work at the New Wolsey Theatre includes: Little Shop of Horrors (New Wolsey Theatre and the Birmingham Rep); Sweet Charity; Mods and Rox; Grandma Saves the Day; Cinderella; Robin Hood and the Babes in the Wood, Aladdin.



BEHIND THE SCENES STARS



CREATIVES

Writer / Director – Peter Rowe
Set & Costume Designer – Barney George
Musical Director – Ben Goddard
Choreographer – Francesca Jaynes
Lighting Designer – David Phillips
Sound Designer – James Cook
Video Designer – Peter Hazelwood
Digital Consultant – Green Spark: Event & Video Production

PRODUCTION

Production Manager – Lewis Moore for CORE
Company Stage Manager – Ellie Randall
Wardrobe Supervisor – Margaret Lock
Wardrobe Assistant – Mandy Smith
Lighting Programmer – Tom Mulliner
Master Carpenter / Set Builder – Giles King
Scenic Artists - Claire Winfield / Katie Skeys

ACCESS

Audio Describer – Michael Achtman
Audio Description Operator – Mae Munuo
BSL Interpreter – Caroline Smith
Captioning Operator – Nathanael Penhallow

OPERATION

Sound No. 1 – Simon Deacon
Lighting Operator – David Phillips
Follow Spot Operators – Jack Goodwin / Crystal Gayle
Stage / Traps Crew – Matt Ramsey / Ben Ager / Lorna Garside
Puppeteer – David Watson

LIVESTREAM

Video Mixer – Callum Macdonald
Digital Support – Adam Clark
Right Auditorium Camera – Giles King
Left Auditorium Camera – Vicky Phillips
Onstage Camera – Dave Gardener
PTZ Operator - Jon Terry
Outside Broadcast Operator – Yasmin Turner

SUPPORTED BY

CORE Production Services / Crosslight and Sound / Green Spark: Event & Video Production / Warehouse Digital

WITH SPECIAL THANKS TO:

Lorna Garside
Steamboat Creative
Matthew Linley
Green Spark: Event & Video Production
Digital-4
Paul Mcghie
Emma Free and Simon Daws
Gipping Construction Ltd
Mike Kwasniak
Miss S Darroch for additional musical arrangements



NW
NEW WOLSEY
THEATRE

BEHIND THE SCENES STARS

The New Wolsey Theatre Team

BOARD OF DIRECTORS

Ashley Bowdler, Sarah Collins, Sara Corcoran, Cathy Frost, Matt Harrison, Kimberly Hurd, David Hutchinson, Richard Lister (Chairman), Louise Rogers, Sophie Woolley, Charlotte Wormstone, Andy Yacoub

Sarah Holmes – Chief Executive

ARTISTIC

Peter Rowe – Artistic Director
Jamie Beddard – Agent for Change

ARTISTIC ASSOCIATES

China Plate, Zoe Svensden

ADMINISTRATION

Matthew Linley – Capital Projects Director
David Watson – Head of Operations
Klyde Robinson – Finance Manager
Lucy Parker – Operations Manager
Sophie Flack – Programme Manager
Julie French – Administration Officer
Suzanne Simpson – Finance Officer
Terri Winwood – Finance Officer

FACILITIES

Neil Daines – Facilities Manager
Keith Mickleburgh – Cleaner
Scott Mickleburgh – Cleaner

CREATIVE COMMUNITIES

Tony Casement – Head of Creative Communities
Rachel Fitzgerald – Creative Communities Manager
Sian Thomas – Creative Communities Produce

CREATIVE ASSISTANTS

Sophy Annison, Ellie Duggan-Matthews, Noah Seeley

FREELANCE PRACTITIONERS

Helen Baggett, Harry Bowen, Andra Chelcea, Natassa DeParis, Jessica Foulger, Lorna Garside, Jack Lang, Joe Leat, Aidan Napier, David Norton, Emily Salter, Kirsty Tallent

PRODUCTION

Peter Hazelwood – Head of Production
Matt Ramsey – Senior Technician
Dave Gardener – Senior Technician
Nathanael Penhallow – Theatre Technician
Vicky Phillips – Theatre Technician
Giles King – Theatre Technician

PRODUCTION CASUAL STAFF

Ben Ager, Ben Ashton, James Aleksic, Shaun Emmerson, Kevin Fuller, Lorna Garside, Crystal Gayle, Nathan Godding, Jack Goodwin, Bradley Hardman, Oakey Hand, Callum Macdonald, Charlie Shephard, James Smith, Danuta Tarbard, Jonathan Terry, Kira Tisbury, Yasmin Turner

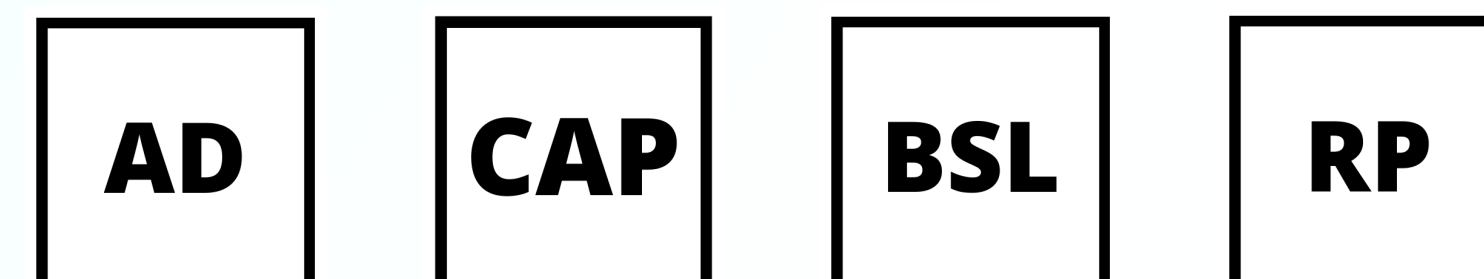
COMMUNICATIONS

Sue Lawther-Brown – Head of Communications
Elliott Wilshier – Customer Relations Manager
Daniel Emmens – Sales Manager
Lucy Mellamphy – Assistant Relationship Manager
Ellis Northrop – Assistant Relationship Manager
Katharine Allerton – Marketing Officer

ACCESS INFORMATION:

All shows, both online and livestreamed, of *The Snow Queen* will have captioning and audio description available. The only performances that will not have captioning are the livestreamed shows on Friday 4th June at 7pm and Saturday 12th June at 2pm, as they will have a British Sign Language interpreted stream instead. If you are in the auditorium for these shows, both the captioning and the BSL will be available to you as usual.

A recorded Relaxed Experience of the show will also be available. To find out more about this, please email tickets@wolseytheatre.co.uk or call us on 01473 295900.



Terms and Conditions:

INFORMATION WAS CORRECT AT THE TIME OF PUBLISHING BUT WE RESERVE THE RIGHT TO MAKE ALTERATIONS WHERE NECESSARY. PLEASE VISIT THE WEBSITE WHICH ALWAYS CONTAINS THE MOST UP-TO-DATE INFORMATION.

ENJOY THE SHOW!